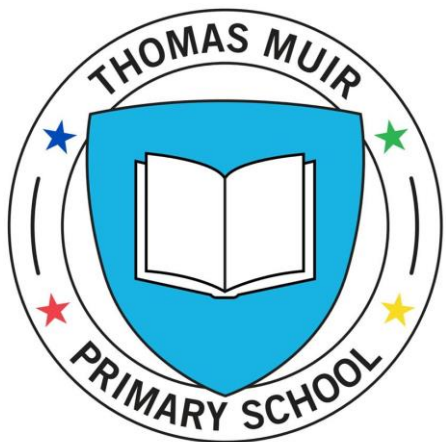


Team TMPS

2022-2023 Teaching Staff



Leadership Team



Hannah Young
Acting Head Teacher



Jennifer Law
Depute Head Teacher



Maria McAllister
Depute Head Teacher



Megan Jones
Acting Depute Head Teacher



Joy Roberts
Principal Teacher



Nicola Pollock
Principal Teacher



Heidi Cochrane
Acting Principal Teacher

Primary 1



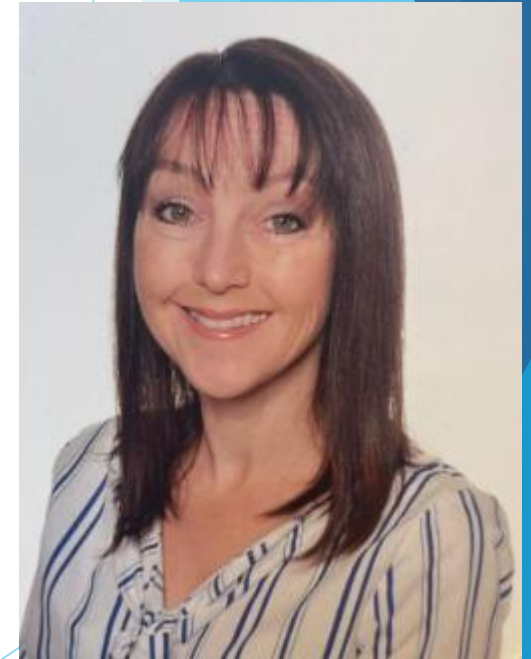
Chantelle Millan
Primary 1a



Elizabeth Dixon
Primary 1b



Aimee McFarlane
Primary 1c



Aileen Johnstone
Primary 1d

Primary 2



Deborah Milenkova
Primary 2a



Hannah McCrae
Primary 2b

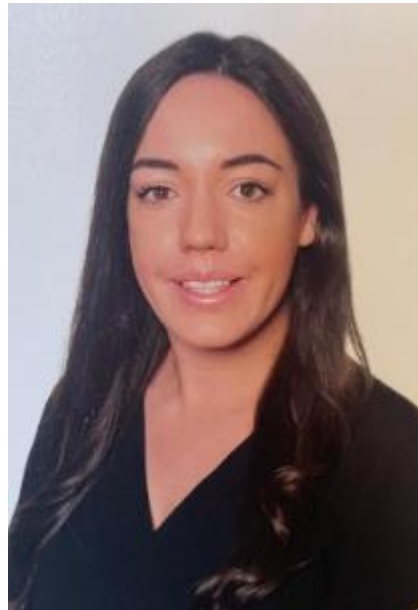


Amy McCluskey
Primary 2c

Primary 3



Nicola Pollock (Mon-Tues)
Fiona Healy (Wed-Fri)
Primary 3a



Molly Jamieson
Primary 3b



Rebecca Frew
Primary 3c

Primary 4



Joanne Broadley (Mon-Thurs)
Shirley-Anne Brightman (Fri)
Primary 4a



Yvonne McCormack
Primary 4b



Georgina Mackintosh
Primary 4c

Primary 5



Lewis Clark (Mon-Wed)
Grace Skelton (Thu-Fri)
Primary 5a



Ailsa Bryden
Primary 5b



Larry Clark
Primary 5c

Primary 6



Kanta Sharma
Primary 6a



Claire Stevenson
Primary 6b



Carmen Lunn
Primary 6c

Primary 7



Kimberley Hughes
Primary 7a



Brogan McLachlan
Primary 7b



Jessica Morton
Primary 7c

RCCT



Laura Morrison
RCCT Teacher



Maresa Muir
RCCT Teacher



Jennifer Reeks
RCCT Teacher

Nurture



Becky Little
Nurture Teacher

Raising Attainment



Lyndsey McLaren
Raising Attainment Teacher



Amy Gallacher
Raising Attainment Teacher



Matthew McGinley
Raising Attainment Teacher



Stevi-Lee Rennie
Raising Attainment Teacher

Classroom Assistants



Clare Leverage



Audrey Manson



Dominique Seehafer



Sandra Thomson

Support for Learning Assistants



Carol Leadbetter



Taj Ahmed



Sandra Bain



Janice Otterson



Lin Choi



Karen Florence



Linda McDonald

Education Support Teacher



Sandra McLean

Family Support Assistant



Nicola Cochrane

Office Team



Janice Craig
Office Manager



Sharon McIntyre
Clerical Assistant

Janet Cook
Clerical Assistant

Housekeeping Assistants



Siobhan Forbes



Pauline Connor